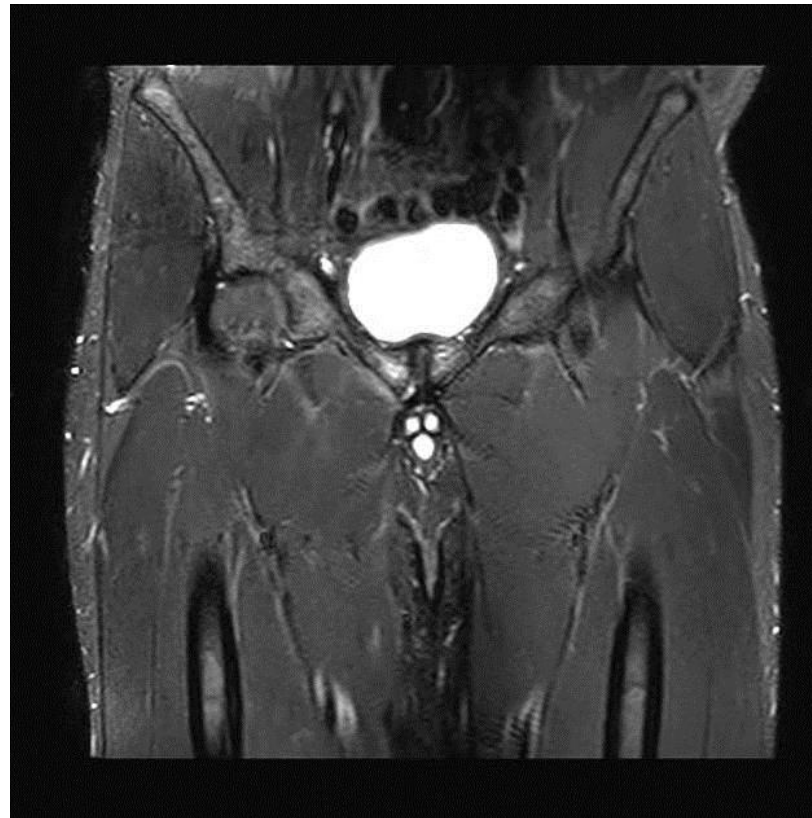


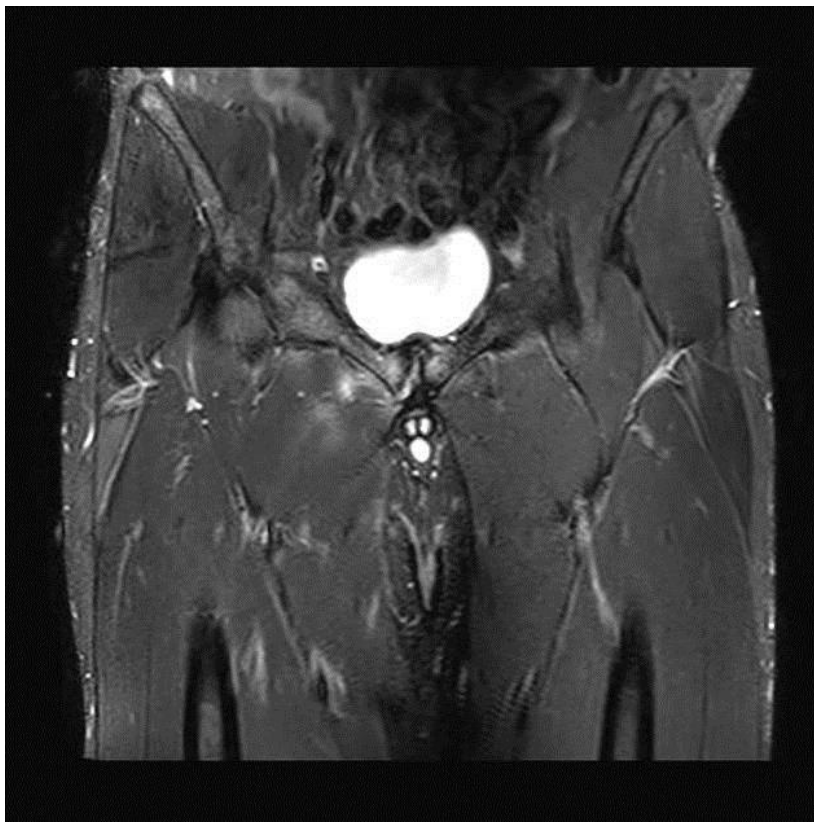
Groin pain Imaging

Case 1

Popping sensation when he was playing football

- ▶ Capsular hypertrophy of superior aspect of pubic symphysis, suggestive of chronic stress overload







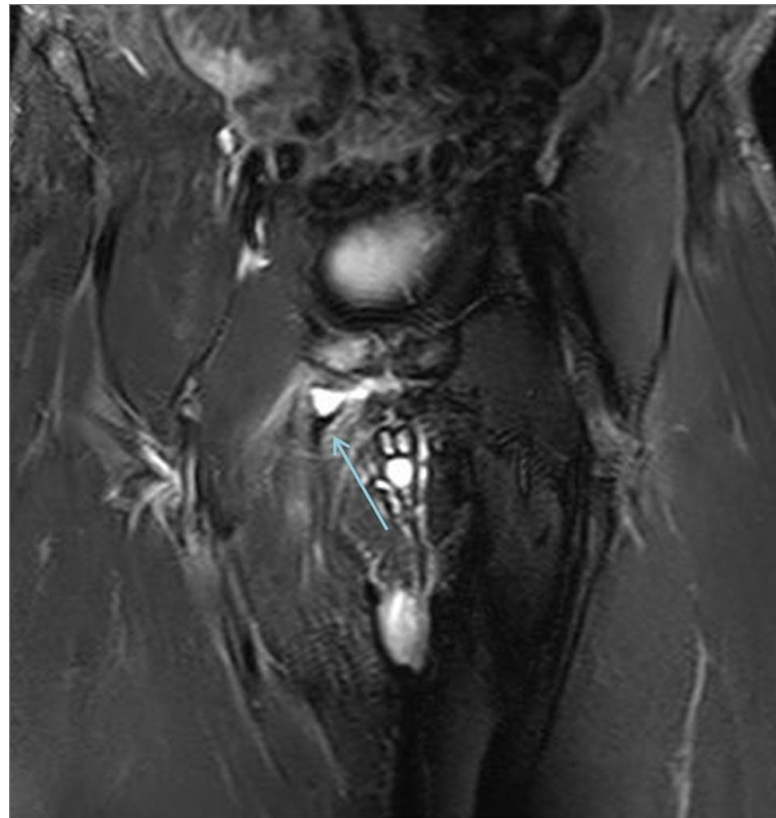
@ifmarc

www.ifmarc.ir

44738641

44738502

- ▶ Avulsion and distal retraction of the adductor longus tendon from its origin with fluid filled gap.



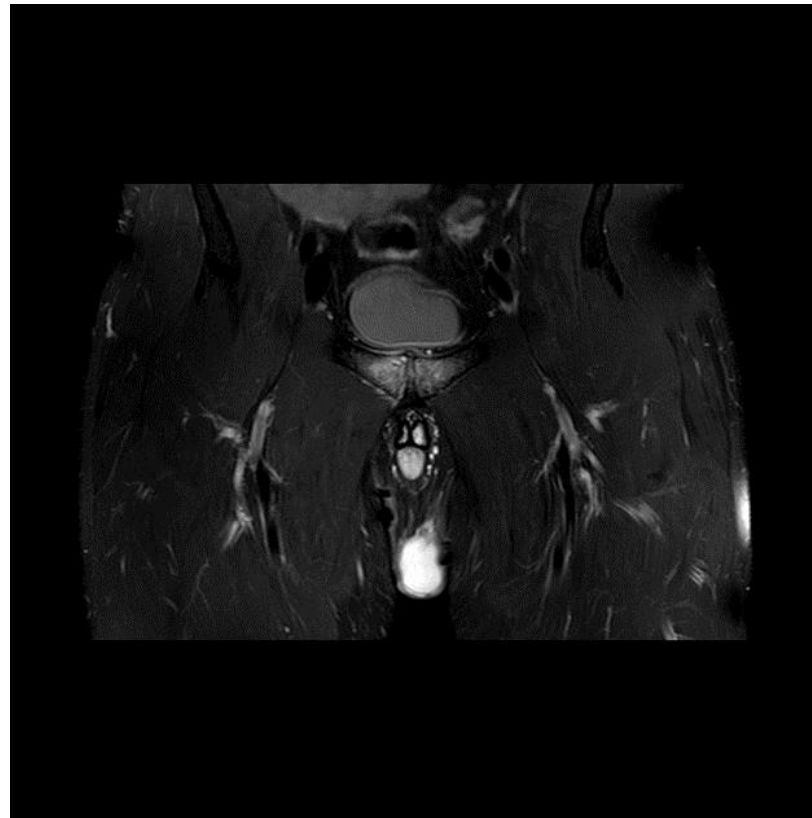
Case 2

Recreational football (soccer) player with chronic right-sided adductor tendinopathy.

► Pelvic XR:OK

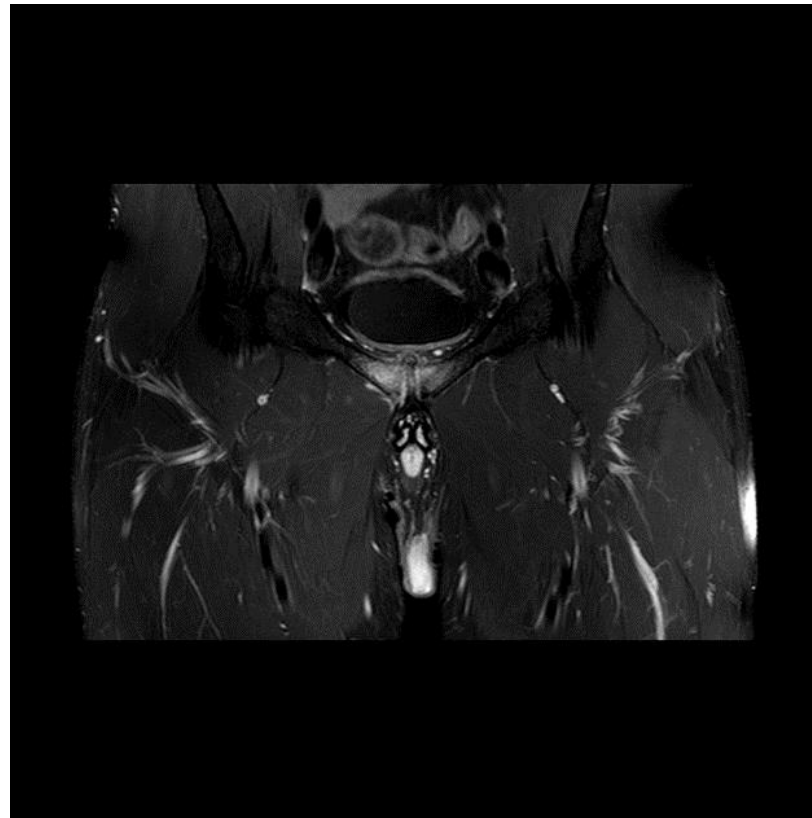


- ▶ Bone marrow oedema around the symphysis pubis congruent with osteitis pubis.
- ▶ Inflammation of the pubic symphysis and adjacent structure (termed osteitis pubis) can arise in athletes in and about the pubic symphysis, especially in those engaged in sprinting, kicking, twisting and cutting, such as football players

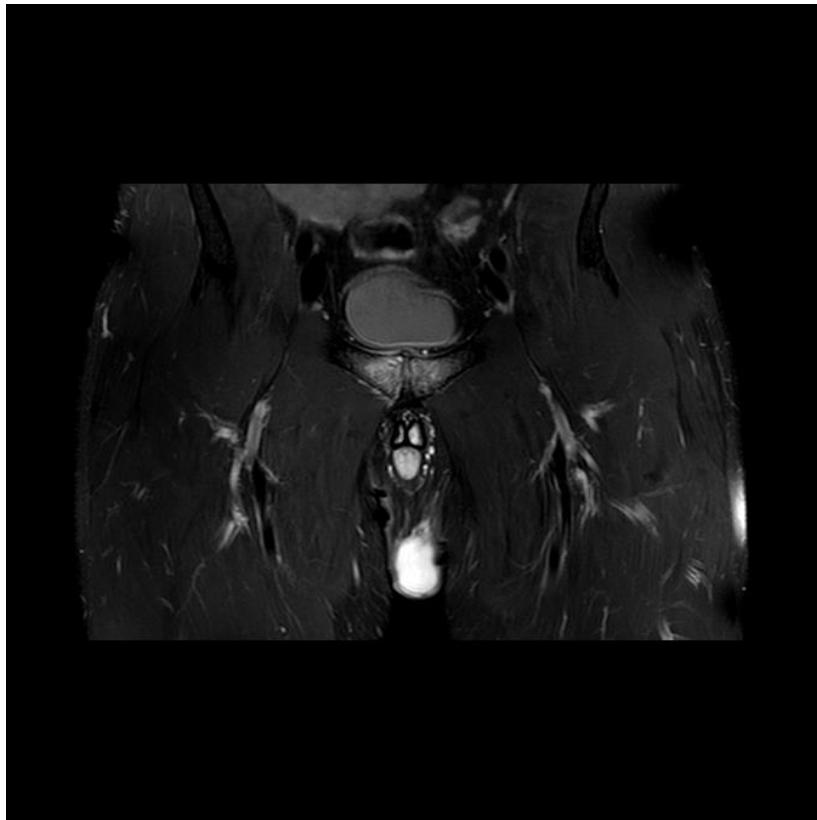


Osteitis Pubitis

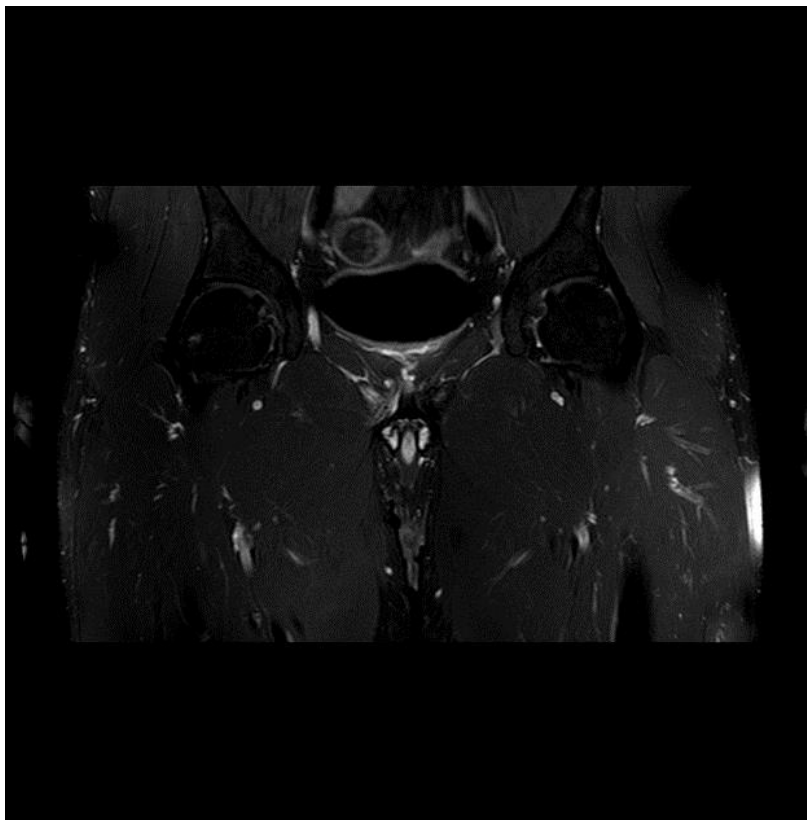
- ▶ Inflammatory changes in and about the pubic symphysis may also arise after massive urologic/gynaecologic operations or pregnancy, osteomyelitis, in the context of rheumatologic diseases, as well as in athletes, as here



Adductor tendinopathy



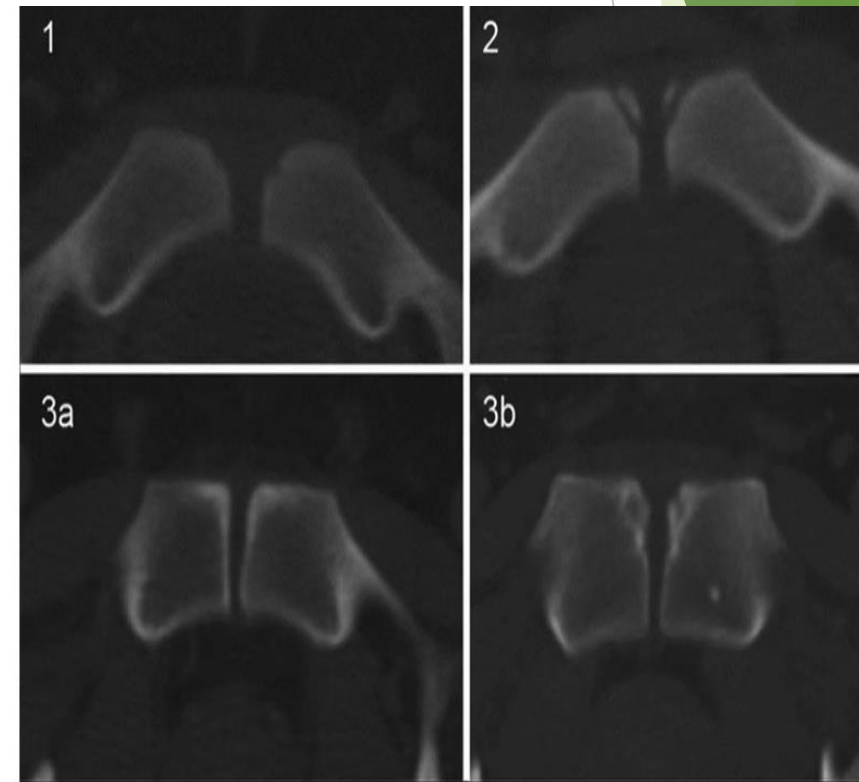
- ▶ High signal intensity in the adductor attachments on the right side of the symphysis are in keeping with the symptoms of adductor tendinopathy



CASE 3

Pubic apophysitis

- ▶ The maturation of this apophysis starts at 16 years of age and continues up to approximately 21 years in male participants; accordingly ,it bridges adolescence and adulthood.
- ▶ Pubic apophysitis may explain some adductor-related groin pain in adolescent athletes



MRI

- ▶ pubic apophysitis: needs to be considered in adolescent athletes reporting adductor-related groin pain.
- ▶ Athlete in his early 20s should be considered skeletally immature.
 - ▶ Signs of apophyseal plates may be assessed with CT scan: however, the risk of exposure to ion is in gradient in this age group makes this ill-advised.
- ▶ More modern MRI examination appear alternative. ▶

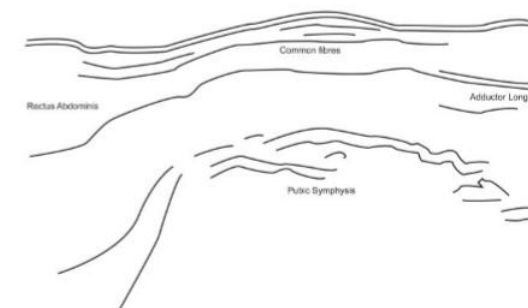
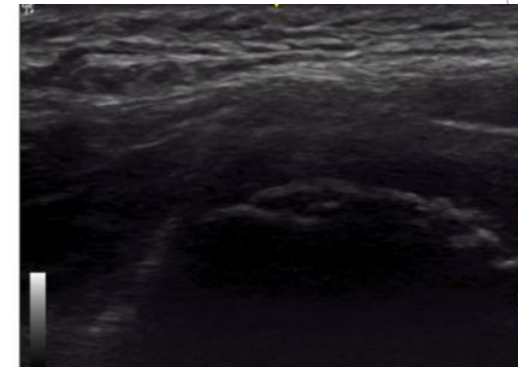


Radiologic finding

PELVIC XRAY (AP) : showing pubic symphysis stress-related signs.



The Cortical & irregularity at the ANT & INF aspect of pubic symphysis



MRI

- ▶ Depiction of the pubic symphysis & adjacent apophysis

